



# TEACH THE BIBLE DURING SCHOOL HOURS



Program Overview & Sample Curriculum

# LIFEWISE ACADEMY



## CONTENTS

<b>Program Overview</b> .....	1
<i>Introduction</i> .....	1
<i>Bible Education Philosophy</i> .....	2
<i>Why Public Educators Love LifeWise</i> .....	3
<i>Launching A Local Program</i> .....	4
<i>Launch List</i> .....	5
<i>FAQs</i> .....	6
<b>Sample Curriculum</b> .....	11
<i>Curriculum Overview</i> .....	12
<i>Year One Lesson Syllabus</i> .....	13
<i>Lesson Content</i> .....	14
<i>Lesson Activities</i> .....	19
<i>Lesson Recap Cards</i> .....	21

# INTRODUCTION

LifeWise Academy can be summed up by answering three big picture questions:

## WHY? The Need for Bible Education in Public Schools

Studies show that 8 in 10 American youth don't attend church ... but 9 in 10 attend public schools. What does this mean? Reaching youth with the gospel in today's culture is a challenge. Since most students aren't inside church walls, why not go where they are?

## WHAT? Released Time and LifeWise Academy

LifeWise Academy is a Released Time Religious Instruction (RTRI) program which exists to reach students in public schools with the gospel. Under little-known RTRI laws, students can be released from public school during the school day to attend religious classes, provided the program is off school property, privately funded and parent permitted.

### Is It Really Legal?

The legality of Released Time Religious Education has been upheld by the US Supreme Court for more than 60 years. Specific state policies vary. For example, Ohio law, HB 171 (ORC 3313.6022) was passed in the Ohio legislature and signed into law by the Governor. The law allows public school students to receive elective Biblical instruction during the school day, following the conditions above.

## HOW? The LifeWise Pledge

LifeWise is committed to serving communities across the nation by providing a valuable program that meets six foundational principles.



### 1 - Gospel Centered

Unapologetically and unwaveringly focused on the substitutionary death, burial and resurrection of Jesus



### 2 - Character Focused

Coming alongside families and schools to help equip students for life



### 3 - Local Church Driven

Being a tool for local churches to use in their work, not vice versa



### 4 - Plug N' Play

Providing communities all the tools they need to launch and maintain an effective program



### 5 - For the Nation

Aiming to provide this program to students coast to coast



### 6 - Excellent

Maintaining the highest standards in all areas knowing that we represent the King

## THE IMPACT

In Van Wert, Ohio, **nearly 95%** of all elementary school students, grades 1-5, participate in LifeWise and are taught the Bible each week.



The best way to get a feel for the vision of LifeWise Academy and its potential to impact your community is by watching the 3-minute demo video at [lifewiseacademy.org/bible](http://lifewiseacademy.org/bible).

# BIBLE EDUCATION PHILOSOPHY

## Teaching Scripture

LifeWise Academy is committed to the faithful, gospel-centered teaching of scripture. Rather than presenting the Bible as simply a book of morals or laws which the students should implement, we present the Bible and the gospel in terms of personal transformation. Each lesson is tied to the broader context of the gospel, the metanarrative of God's unfolding plan of redemption - specifically that through the life, death and resurrection of Jesus Christ, God has come to reconcile individuals by His grace and to renew the whole world by and for His glory. This is the gospel that saves and empowers true inward change. Out of this gospel, we will present and apply implicit and explicit character principles which the students can live out in their schools, families and communities.

## Foundational Curriculum

The foundation for LifeWise curriculum is The Gospel Project (TGP), a Christ-centered, chronological Bible study program produced by LifeWay. Where other programs tell students Bible stories, TGP focuses on "God's plan to rescue His people from sin through the life, death and resurrection of His Son, Jesus Christ." We draw from and build on the lessons and activities provided by TGP. Tied to each lesson is a specific character trait that, as we are changed by the gospel, becomes more evident in our lives. Over the course of several years, the curriculum guides students through the entire Bible.

## The LifeWise Threefold Focus

Each LifeWise lesson presents one Bible passage and links to the gospel and the students' character with an intentional focus on three areas:

- ✦ **Head:** We focus first on simply knowing what the Bible says, what happened in the story and what we learn about God, ourselves or the world through each passage.
- ✦ **Heart:** We examine how the Bible story ties into and points to the big picture of the gospel. We consider our failures, sinfulness and need of a savior as well as Jesus's victory in accomplishing for us what we could not achieve for ourselves.
- ✦ **Hands:** We explore ways students can live out the changed character that the gospel produces. More than sending the students out to merely "try harder to be good," we show how, as the gospel transforms our hearts, Jesus changes our desires, actions and character to be more like His.

## Results & Responses

LifeWise believes the faithful teaching of the Word of God is spiritually effective and fruitful. We expect the results to vary in magnitude and visibility. We plant and water, but it is the Holy Spirit who brings true inward growth and change. While many tools to mark spiritual conversions have been used, such as altar calls, recited prayers and commitment cards, we will avoid using formulaic methods and defer to families and local churches to authenticate and celebrate spiritual conversions. Our continual appeal to students will be to believe the gospel, repent from sin, trust in Christ and get connected with a local church.

# WHY PUBLIC EDUCATORS LOVE LIFEWISE

Public educators are heroes. Now more than ever, schools must address character and mental health on top of providing academic instruction. LifeWise Academy comes alongside administrators and teachers as a supportive ally in the fight for better character development, mental health and academic achievement.

## Four Powerful Benefits



### Character Development

Teaching weekly character qualities and how they can be applied in the classroom, at home and in the community



### Mental Health

Providing a means for religious activity which studies show can positively affect students' mental health



### Academic Performance

Reinforcing and supplementing the skills and achievements that students must gain in order to succeed in school and in life



### Family & Community Involvement

Attracting and retaining families who may otherwise opt out of public school due to lack of religious instruction.

Read more about documented benefits by downloading the LifeWise "What Educators Need to Know" booklet at [lifewiseacademy.org/educators](http://lifewiseacademy.org/educators).

## Easy To Work With Approach

### Keeping It Legal

- ✦ LifeWise is keenly aware of the need to keep public and religious institutions separate. We are diligent to adhere to relevant laws and policies, namely the maintenance of a program that is (1) privately funded, (2) off school property and (3) inclusive of only students with parental permission.

### Keeping It Simple

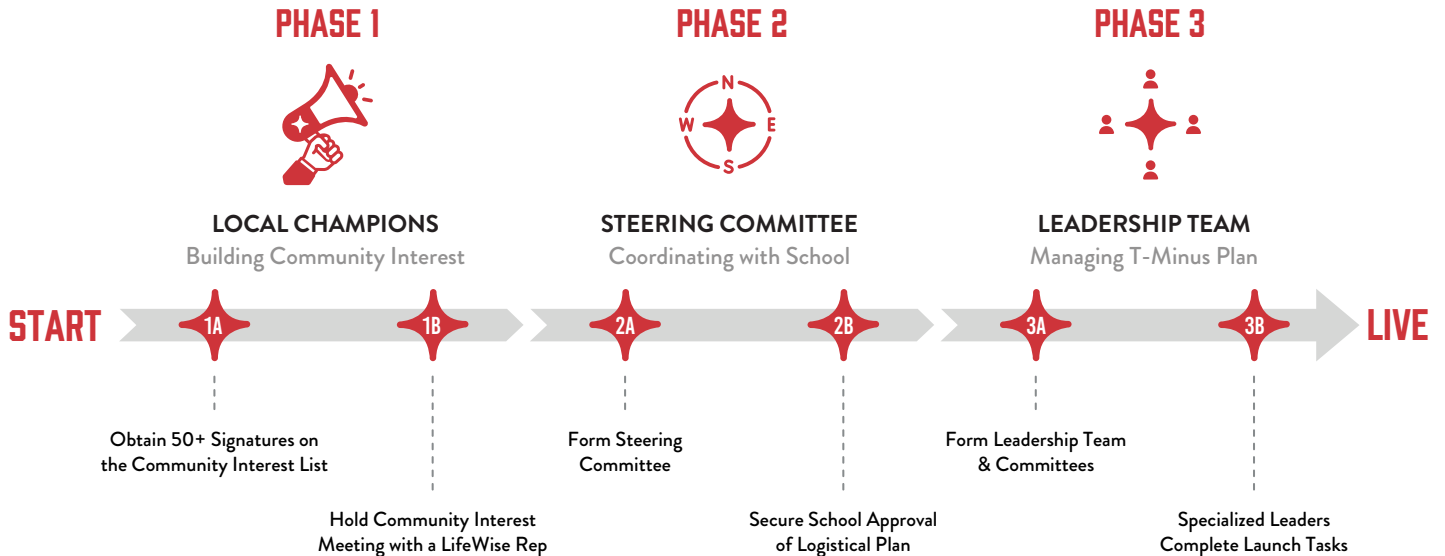
- ✦ LifeWise focuses on the central message of the Bible. We avoid getting bogged down in the finer points of religious doctrine. Instead, we focus on the most foundational themes that speak to the issues common to all people.

### Keeping It Practical

- ✦ LifeWise seeks to create real and lasting change for students, schools and communities. We continually look for ways to make instruction not only conceptual, but also actionable.

# LAUNCHING A LOCAL PROGRAM

Communities collaborate with LifeWise staff on a three phase launch process:



“ When I started the process of launching a LifeWise two years ago, I was apprehensive. If only I knew how effective it would be! Over 60% of the students enrolled in our first year! ”  
- Sandy Steiner, Local Program Director

## Great News - Phase One Is Super Simple!

It's NOT time to meet with the superintendent, look for real estate or create a budget. Those details come later. Right now, you just need two things: a CHAMPION and a LIST.



### What is a Champion?

A Champion simply spreads the word about LifeWise to help grow their local Community Interest List. There's absolutely no cost or long-term commitment. When you register, we'll send you all the tools and resources you need to grow your list.



### What is a Community Interest List (CIL)?

A CIL is kind of like a petition. People in your community sign it to simply say, "Yes, let's start a local LifeWise!" Building the list:

1. Shows LifeWise you're serious.
2. Shows your school the community really wants this.
3. Creates a database of future volunteers and donors.

## Get Started Today

Find your community interest list and register to become a Champion at [lifewiseacademy.org](http://lifewiseacademy.org).



# YES, I WOULD LIKE TO SEE A LIFEWISE ACADEMY STARTED IN MY SCHOOL DISTRICT!



I would consider volunteering



I would consider donating

1 Name.....  
(Please print clearly) Phone.....  
 Email.....  
 School District..... Home Church.....

2 Name.....  
(Please print clearly) Phone.....  
 Email.....  
 School District..... Home Church.....

3 Name.....  
(Please print clearly) Phone.....  
 Email.....  
 School District..... Home Church.....

4 Name.....  
(Please print clearly) Phone.....  
 Email.....  
 School District..... Home Church.....

5 Name.....  
(Please print clearly) Phone.....  
 Email.....  
 School District..... Home Church.....

6 Name.....  
(Please print clearly) Phone.....  
 Email.....  
 School District..... Home Church.....

7 Name.....  
(Please print clearly) Phone.....  
 Email.....  
 School District..... Home Church.....

8 Name.....  
(Please print clearly) Phone.....  
 Email.....  
 School District..... Home Church.....

9 Name.....  
(Please print clearly) Phone.....  
 Email.....  
 School District..... Home Church.....

10 Name.....  
(Please print clearly) Phone.....  
 Email.....  
 School District..... Home Church.....

# FREQUENTLY ASKED QUESTIONS

## 1. Is teaching the Bible during school hours really legal?

- ✦ Yes! The concept of Released Time Religious Instruction (RTRI) has been upheld multiple times at the Federal (SCOTUS) level as constitutional. RTRI guidelines both guard against government establishment of any one religion and allow expression of the right to the “free exercise of religion,” also protected by the First Amendment.

## 2. How does LifeWise compare to before and after-school programs?

- ✦ LW is complementary to existing before and after-school programs like Fellowship of Christian Athletes, Youth For Christ and Child Evangelism Fellowship. The primary distinctive feature of LW is that it operates during the school day, thereby engaging the students who are least likely to attend before and after-school programs due to transportation, extracurricular and other issues.

## 3. How is LifeWise different from other Released Time programs?

- ✦ LW offers a structured, “plug-n-play” model which provides communities all the tools to launch and maintain an effective program while limiting administrative duties. The proven model also lends credibility to school administrators, parents, donors and volunteers.

## 4. What’s the history of LifeWise?

- ✦ LifeWise Academy (LW) is a division of Stand For Truth (SFT), a 501c3 nonprofit Christian ministry with the vision to reach unchurched public school students with the gospel. SFT was founded in 2007 as an event-based ministry working with churches across the U.S. to reach their local schools with character-based school assemblies and corresponding gospel-centered evening outreach events. More than 2,000 communities and 1,000,000 students have been impacted by SFT events in the last several years! In 2018, SFT leadership learned about the seemingly untapped opportunity of Released Time Religious Instruction through an incredible ministry in Van Wert, OH. This program has a nearly 95% participation rate among public elementary school students. The two organizations teamed up to create LW, launching the first two LW locations less than two years later.

## 5. Does LifeWise interfere with classes during the school day?

- ✦ No, while classes are held during the school day, they do not interfere with students’ mandatory courses or extracurricular activities. The class schedule is set by school personnel in consultation with LW representatives. Usually, LW classes are scheduled as part of the “specials” rotation or for times when other elective courses are offered.

## 6. How do LifeWise classes work?

- ✦ LW classes are usually the size of normal school classes, between 15 and 25 students. Typically, students attend LW once each week for a class lasting between 45 minutes and one hour. Students will either walk to the off-site location under the supervision of volunteer chaperones or be driven by bus or van. Locations can include churches, community centers, dedicated LifeWise Academy buildings or other facilities.

## 7. Does each LifeWise location have to file for a 501c3?

- ✦ No. Each LW location has 501c3 tax exempt status for the administration of their program under the SFT umbrella. However, SFT/LW will not purchase local real estate. If a local community decides to purchase a property for LW use, then they may opt to form a separate 501c3 simply for the ownership of the property. An individual, company, church or other existing nonprofit may take ownership of the land and facility.



## 8. What are the options for LifeWise classroom facilities?

- ✦ The ideal facility is located adjacent to the school. This allows students to walk to LW, reducing transportation time and increasing classroom time. However, using a vehicle to transport students to a nearby facility is sometimes the most viable option. The four primary types of RTRI facilities:
  - i. Rent or use an existing space like a church or business.
  - ii. Purchase existing property, like a home, and remodel as necessary.
  - iii. Build your own facility. This could be a LW model design or unique local design.
  - iv. Use a modular/mobile classroom.

## 9. If we build a local facility, would LifeWise own it?

- ✦ No, SFT/LW will not purchase or own local real estate. If a local community decides to purchase property for LW use, they may opt to form a separate 501c3 for the ownership of the property.

## 10. What is the cost to operate a local program?

- ✦ The cost varies from location to location. Some of the most significant costs include:
  - i. **Director/Teacher(s)** - Local programs are encouraged to hire a part-time paid director upon entering launch phase three. If a local community has a nearby regional Field Representative, it is recommended that the Field Rep serve as the interim Director. It is also highly recommended that local programs hire paid teachers.
  - ii. **Facility/Transportation** - These costs can vary greatly depending on whether a facility is donated, rented, purchased or built, and whether transportation to an off-site location is required.
  - iii. **Membership Fee** - After the initial startup fee, the LW Support Center provides all the curriculum, technological systems, liability insurance, background screenings, training, coaching, etc., to local programs for an annual fee based on the number of students enrolled.
  - iv. **Miscellaneous** - This includes the cost of classroom supplies; printing and postage for promotional materials, permission slips, thank you notes, etc.; endowment contributions to invest in the future of the local program as well as the national expansion fund; along with a launch fee paid to LW HQ to offset the cost of staff, travel, systems and promotional fundraising materials provided by HQ through the launch process.
- ✦ **NOTE:** Our numbers indicate that a local program with modest teacher pay and a modest facility can operate at the cost of about \$120 per student per year.

## 11. Who pays for all of this?

- ✦ Local Donors. Each LW is funded by private donations through local fundraising efforts. The LW Support Center provides strategies, training and marketing materials to local LW leaders to effectively raise the necessary funds. The strategies include one-on-one meetings, small group gatherings and Sunday morning church presentations.

## 12. If a community raises funds to launch a local program and then decides not to proceed, what happens with the donations?

- ✦ The donations will remain earmarked for the local area for one year from the date the launch is officially put on hold. If no additional donations for the local area are made after the one year mark, funds raised will be redirected to the national launch fund. Additional donations will extend the one-year hold from the date of deposit.

### 13. Does each LifeWise Academy need its own insurance policy?

- ✦ No, each LW location is covered under the SFT insurance policy paid for by the LW Support Center.
- ✦ **NOTE:** The cost of the following coverage for all local programs is paid by the LW Support Center: Directors and Officers, Religious Freedom, Sexual Acts, Employment Practices, Property, Media Fallout, Medical Coverage, Income and Extra Expense and Donations. Building and Personal Property coverage, if applicable, is managed by the LW Support Center, but the cost is passed along to the local program.

### 14. Do we need to choose our own program name?

- ✦ No. Each LW location uses the name “LifeWise Academy” with a school district or geographical surname, whichever is most appropriate (e.g., “LifeWise River View,” “LifeWise Defiance Area”).

### 15. How is a local program governed?

- ✦ A LW Leadership Team is made up of individuals filling nine leadership roles for the purpose of running a local program. The nine leadership roles are:
  - LW Director
  - Assistant Director/Fundraising Leader
  - Secretary/Administration Leader
  - Treasurer/Finance Leader
  - School Relations Leader
  - Church Relations Leader
  - Facility Leader
  - Teaching Leader
  - Prayer Leader
- ✦ An individual can fill multiple leadership roles, but at least five individuals are recommended.

### 16. How do we choose a teacher?

- ✦ The LW Support Center provides a thorough vetting process for teachers to ensure they are sound in their theology and understanding of the gospel. Also, we highly recommend looking for someone with previous educational or teaching experience.

### 17. What are the volunteer needs?

- ✦ Volunteers are needed to walk the students to and from the school, assist in the classroom and help as needed. Each class should have at least two volunteers plus the teacher for each class. Our goal is to have two adults in the classroom at all times, especially at the Elementary School level.

### 18. Do you perform background checks on all volunteers and teachers?

- ✦ Yes, all LW locations’ Leadership Team members, teachers and volunteers are required to complete a background screening through Protect My Ministry (PMM) to ensure the safety of the students and the program. Additionally, we encourage completion of child safety video training offered through PMM.

### 19. Does LifeWise have protocols for behavioral issues?

- ✦ Each LW class should have two adult volunteers to aid teachers with behavioral issues as necessary. The default procedure for poor behavior is to escort the child back to the school through a process agreed upon by the LW location and public school.

## 20. How can a parent elect to enroll their child in LifeWise?

- ✦ Parents must complete a LW permission slip that is registered with the school office before their child may attend.

## 21. What happens if a parent wants to remove their child from LifeWise?

- ✦ LW is completely voluntary, and parents have the right to withdraw their child at any time for any reason. Parents who wish to have their child dismissed from participating in LW will be asked to fill out a Dismissal Form which includes a section encouraging parents to provide feedback as to why they wish to remove their child.

## 22. How do churches with differing beliefs and practices partner together to provide LifeWise to local students?

- ✦ The LW Statement of Faith, Philosophy of Ministry and Team Member Conduct is designed to focus on the core tenets of the Christian faith, particularly the gospel, so as to be inclusive of all orthodox Christian churches and most attractive to those which are gospel-centered. A special effort is made to avoid teaching an official position on secondary issues (e.g. mode of baptism, the millennium, the gift of prophecy, etc.). If any of these topics come up in class, whether through curriculum or discussion, teachers are encouraged to make it clear to students that these are things which many well-meaning Christians and churches disagree about and that LW, as a program, does not have a particular stance on the issues.

## 23. Has there been local opposition to LifeWise?

- ✦ The very minimal opposition we've seen has been based on misconceptions, misunderstanding and false information regarding the legality of RTRI and LW. The most effective strategy in dealing with local opposition is to direct people to [lifewiseacademy.org](http://lifewiseacademy.org) and encourage them to explore the site and watch the video.





# LIFEWISE ACADEMY

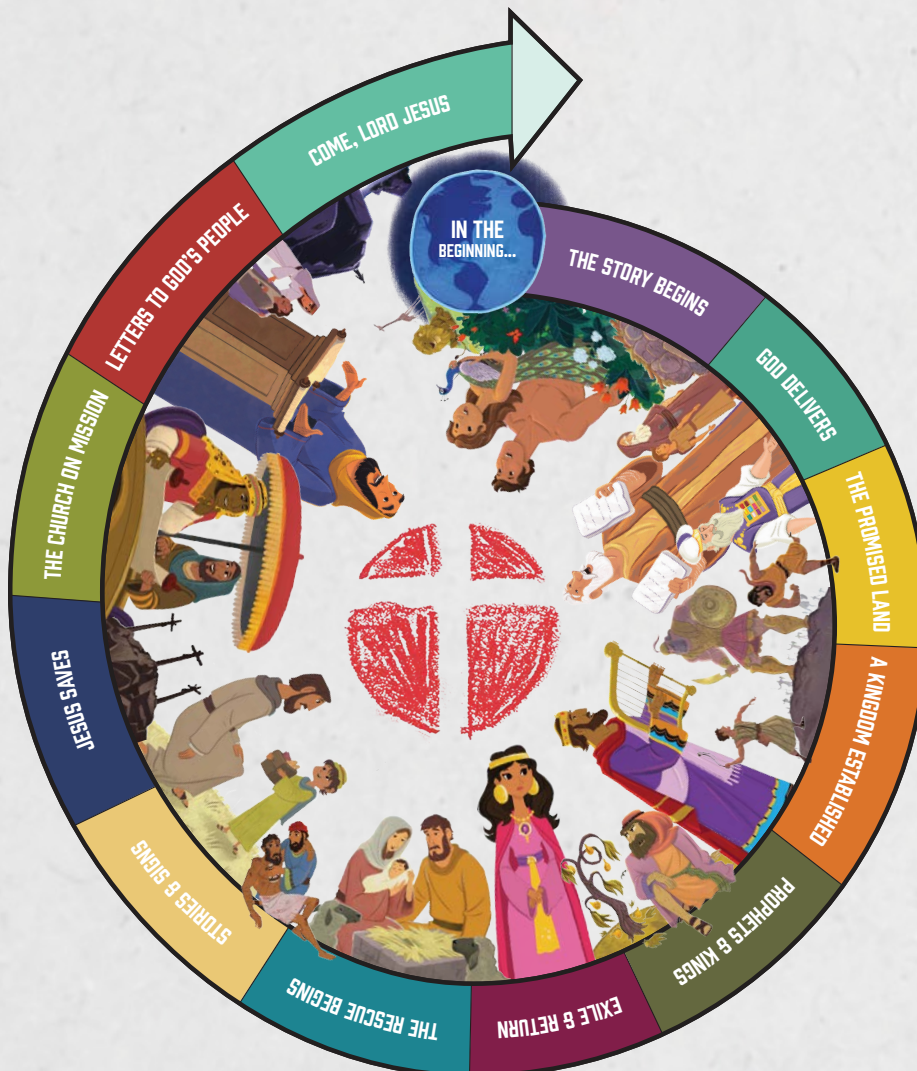


---

## SAMPLE CURRICULUM

A JOURNEY THROUGH THE STORYLINE OF THE BIBLE

---



POWERED BY THE GOSPEL PROJECT

# CURRICULUM OVERVIEW

## Introduction

LifeWise Academy utilizes the basic structure and focus of the highly-acclaimed curriculum, The Gospel Project (TGP). This curriculum, originally produced for Sunday school and small group applications, has been licensed by LifeWise (LW) and reformatted to suit the needs of a Released Time Religious Instruction (RTRI) program. The LW curriculum is designed to take students through the entire Bible, beginning in Genesis and ending in Revelation, over the course of five years. The lesson's order and activities are flexible and can be modified as the teacher finds necessary. Teachers can easily navigate the LW curriculum using the nine elements below.

- 1. Leader Bible Study:** Allows teachers to dive deeper into the Bible passage, provides extra background information and prepares the teacher to answer questions from students.
- 2. Session Starters:** Introduces the Bible lesson in an active, hands-on way.
- 3. Key Passage & Activity:** Provides a fast-paced activity with each lesson that enables students to memorize and interact with the unit's key passage.
- 4. Giant Timeline & Review:** Lays out a sample script to review previous lessons in the unit.
- 5. Big Picture Q&A:** Provides a helpful question about Jesus and the correct biblical answer for each unit.
- 6. Bible Story:** Shares the Bible lesson in an age-appropriate way and allows the option of briefly retelling or acting out the story using boldface words.
  - ✦ **Story Point:** Summarizes the main idea students should take away from the Bible story.
  - ✦ **Jesus Connection:** Reveals how each Bible lesson points specifically to Jesus throughout scripture.
- 7. LifeWise Quality:** Provides character education that is rooted in the heart-changing message of the gospel and explains how students can practically live out their faith through God's power.
  - ✦ **LifeWise Quality:** Defines the quality.
  - ✦ **Living LifeWise:** Explains God's supernatural ability to create positive change within us.
  - ✦ **LWQ Breakdown:** Gives a brief explanation of how to live out the LifeWise quality and simplifies the script for students that need a short discussion on it.
  - ✦ **Script:** Provides a sample dialogue to engage students and encourage them to live out each specific quality.
- 8. Bible Story Review & Bible Skills:** Helps students to understand and engage with the Bible story in an enjoyable way.
- 9. Activities**
  - ✦ **Classroom Activity:** Connects concepts from the Bible lesson to fun and memorable activities.
  - ✦ **Activity Page:** Allows students to explore the key points of the lesson in a fun and engaging way as well as provides family discussion starters and activities for the students to take home.
  - ✦ **Journal:** Gives older students time to meditate on the Bible story and identify how they can apply it in their lives.
  - ✦ **Prayer & Requests:** Provides a script to pray God's word for the students and allows time for students to voice concerns, thanks and praise to God.
  - ✦ **Recap Card:** Reviews the lesson material in five sections: Story Point, Big Picture Q&A, Jesus Connection, Key Passage and Living LifeWise. Each student receives a card to show their parents what they learned in class.

# YEAR ONE LESSON SYLLABUS

## SEMESTER ONE

Character Trait	Lesson	Bible Passage
<b>Gratitude</b>	God Created the World	Genesis 1:1-25
<b>Respect</b>	God Created People	Genesis 1:26-2:25
<b>Obedience</b>	Sin Entered the World	Genesis 3:1-24
<b>Responsibility</b>	Cain and Abel	Genesis 4:1-16, 25-26
<b>Patience</b>	Noah and the Ark	Genesis 6:5-9:17
<b>Humility</b>	The Tower of Babel	Genesis 11:1-9
<b>Courage</b>	God's Covenant with Abraham	Genesis 12:1-3, 15:1-21, 17:1-9
<b>Sacrifice</b>	God Tested Abraham	Genesis 22:1-19
<b>Trustworthiness</b>	The Promise Reaffirmed	Genesis 25-28
<b>Generosity</b>	The Stolen Blessing	Genesis 25:27-34, 27:1-45
<b>Determination</b>	Jacob's New Name	Genesis 32-33
<b>Perseverance</b>	Joseph Sent to Egypt	Genesis 37:1-36, 39:1-41:57
<b>Forgiveness</b>	Joseph's Dreams Came True	Genesis 42:1-46:34, 50:15-21
<b>Joy</b>	Jesus Was Born	Luke 1:26-56, 2:1-20; Matthew 1:18-24, 2:1-21

## SEMESTER TWO

<b>Compassion</b>	Moses Was Born and Called	Exodus 1-3
<b>Reliable</b>	The Plagues, Passover and Red Sea Crossing	Exodus 5-14
<b>Contentment</b>	The Wilderness Test	Exodus 15:22-17:7
<b>Truthfulness</b>	The Golden Calf	Exodus 32:1-35; 34:1-9
<b>Honor</b>	The Ten Commandments: Love God	Exodus 19:1-20:11; 31:18
<b>Justice</b>	The Ten Commandments: Love Others	Exodus 20:12-17
<b>Enthusiasm</b>	The Tabernacle Was Built	Exodus 35:4-40:38
<b>Initiative</b>	God Gave Rules For Sacrifice	Leviticus 1-27
<b>Submission</b>	Worship Only God	Deuteronomy 1; 3:23-4:40
<b>Commitment</b>	God Reminded His People of His Covenant	Deuteronomy 5:1-6:25; 8:1-11:1, 26-28
<b>Love</b>	Jesus's Death and Resurrection	Matthew 21:1-17, 26:36-28:10





## LESSON 2: GRATITUDE

### GOD CREATED THE WORLD

Genesis 1:1-25

#### LIFEWISE QUALITY

GRATITUDE - To appreciate what someone has done for or given to me.

#### JESUS CONNECTION

Jesus is Lord over everything. Everything was created by Him and for Him. Jesus holds everything together. (Colossians 1:16-17)

#### LIVING LIFEWISE

Because God created everything, I can show gratitude for Him and all that He made.

#### LWQ BREAKDOWN

I can treat all of the things God created with respect and appreciation because I am thankful God made it.

#### LEADER BIBLE STUDY

In the beginning, God created everything. God created the universe *ex nihilo*, or “out of nothing.” All of creation began with a word. When God spoke, it happened. Light, land, sky, stars, plants, and animals. God made them all, and they were good. Creation was perfect, just as God intended.

Every story in the Bible is a small piece of a much bigger story—God’s redemptive story. Sin would enter the world and affect everything, but God already knew. He already had a plan to show His grace to people through His Son (2 Tim. 1:9), to rescue and restore. In fact, the Bible says that God’s plan existed before He created the world. (Eph. 1:4-6)

The Bible is the story of how a great God redeemed rebellious people by sending His Son, Jesus, to be the perfect sacrifice for sin. The story of Jesus does not begin in a manger. The Son has always existed, and He was present at creation. He is the Word through whom all things were created. (John 1:1-3)

Colossians 1:16-17 says that everything was created by Him and for Him, and He holds everything together. Through creation, we see and understand God’s eternal power and divine nature. (Rom. 1:20)

As you begin teaching kids about creation, help them discover who God is. Remind the boys and girls that God created everything with a purpose, to bring Him glory. Psalm 19:1 says, “The heavens declare the glory of God, and the sky proclaims the work of His hands.”

The Book of Genesis is the beginning of the greatest story ever told. It is a true story, and at the center of it all is the true hero, our Savior, Jesus Christ. This story changes everything.



## SESSION STARTERS

### Out of Nothing (10 min)

- ✦ Form groups of four to six kids. Give each group a bag of supplies. Explain that groups will work together to create different items from the supplies. Challenge groups to build the tallest tower or the strongest bridge. Choose a winner with each assignment. Be mindful of how much time you have and use a timer to limit time for each build. Pretend to pour the contents from an empty bag.
- ✦ Could you create something out of nothing just by talking? God is so powerful that He created everything just by speaking it into existence. God created everything for His glory. How do you feel when you look at something beautiful that God has created? We can praise God for all the wonderful things He has made!

### Creating a Masterpiece (5 min)

- ✦ Display a painting or other handmade item in a place the kids can see it. Ask them what supplies they would need to create something like this. Allow kids to brainstorm a list.
- ✦ We need supplies to make just about everything (a painting, a pizza, a car, a computer) but God didn't. When he created the world and everything in it, he created it out of nothing, using only his power. What an amazing God!

---

## KEY PASSAGE & ACTIVITY | 1 CORINTHIANS 8:6

### Memory Verse Toss (7 min)

- ✦ Make sure the key passage, 1 Corinthians 8:6, is visible for each child, either as the printed poster or written on a dry erase board. Read the verse together.
- ✦ Before class, write the words of the key passage on paper plates and hide them around the room. Create two sets (use different colored markers to differentiate between the two sets).
- ✦ Form two teams and assign each team a color. Place a jump rope on the ground and explain that each team will make a straight line starting behind the jump rope. Teams will take turns sending one player to look for plates until all are found. After the plates are found, designate one child from each team to hold the hula hoop a few feet from the jump rope. Guide each player to toss the paper plate through the hula hoop in the order of the verse, reading the word aloud as a team as each plate is tossed.

---

## GIANT TIMELINE & REVIEW (3 MIN)

We are at the very beginning of time as we know it. (*Point to beginning of the giant timeline*) God the Father, God the Son, and God the Spirit were not created but have always existed. That's pretty hard for my brain to understand, but I know it's true! The story of creation is the first story in the Bible, and it is the beginning of God's great story that He has written for us! God created everything for His glory. How do you think we can give God glory? We can give God glory by pleasing Him with our lives. The story that begins with creation continues throughout history, and even you are a part of it!

## Big Picture Q&A

**Q:** Why did God create the world?

**A:** *God created the world and everything in it for His glory.*

## BIBLE STORY (10 MIN)

### God Created the World | Genesis 1:1–25

**In the beginning**, nothing existed except for God. **God** spoke and **created the heavens and the earth**. When He first created the earth, it had no shape and total darkness covered the earth. The Spirit of God was there, hovering over the waters.

God spoke. **He said, “Let there be light!”** and what God said happened. Light was created. **God saw that the light was good**, and He separated the light from the darkness. God called the light *day*, and He called the darkness *night*. **Evening came, and then morning came. That was the first day of creation.**

**God spoke again: “Let there be an expanse between the waters to separate them.”** What God said happened. He made a space between the water that was on the earth and the water above the earth. **God called the expanse sky. Evening came, and then morning came. That was the second day of creation.**

**God said, “Let the water under the sky be gathered into one place, and let the dry land appear.”** What God said happened. God called the dry land *earth*, and He called the gathered water *seas*. **God saw that it was good. Then God said, “Let the earth make plants and trees with fruits and seeds.”** What God said happened. Plants and trees grew, and God saw that it was good. **Evening came, and then morning came. That was the third day of creation.**

**Next, God placed lights in the sky. God created the sun to shine during the day and the moon and stars to shine at night.** God gave us lights to provide light on the earth, to separate day from night, and to help us track time in days and years. **God saw that it was good. Evening came, and then morning came. That was the fourth day of creation.**

**Next, God made creatures that move and swim in the water. He made birds to flap their wings and soar across the sky. God saw that it was good.** God told the animals to multiply, and they filled the seas and the sky. **Evening came, and then morning came. That was the fifth day of creation.**

**Then God made more animals**—livestock, creatures that crawl, and wildlife to live on the earth. When God said it, it happened. **And God saw that it was good.**

### Ask the Following Review Questions:

- ✦ What did God create on the first day of creation?  
*The heavens and the earth, and day and night (Genesis 1:1–5)*
- ✦ What did God create on the second day of creation?  
*Sky (Genesis 1:6–8)*
- ✦ What did God create on the third day of creation?  
*Land and seas, plants, trees (Genesis 1:9–13)*
- ✦ What did God create on the fourth day of creation?  
*Sun, stars, moon (Genesis 1:14–19)*

- ✦ What did God create on the fifth day of creation?  
*Creatures in the water and birds (Genesis 1:20-23)*
- ✦ What did God create on the sixth day of creation?  
*Animals (Genesis 1:24-25)*
- ✦ How did God create all things?  
*He spoke and they were created (Genesis 1:3,6,9,11,14,20,24)*
- ✦ What did God think of His creation?  
*It was good (Genesis 1:10,12,18,21,25)*
- ✦ Why did God create the world?  
*God created the world and everything in it for His glory.*

### Story Point

God created everything for His glory.

### Jesus Connection

Jesus is Lord over everything. Everything was created by Him and for Him. Jesus holds everything together (Colossians 1:16-17)

---

## LIFEWISE QUALITY (3-4 MIN)

**GRATITUDE** - To appreciate what someone has done for or given to me.

### Living LifeWise

Because God created everything, I can show gratitude for Him and all that He made.

### LWQ Breakdown

I can treat all of the things God created with respect and appreciation because I am thankful God made it.

### Summary/Script

Because God is the owner and creator, we can be grateful for all that He made. How do we thank God for what He made?

The opposite of a grateful heart is an unthankful heart. When we aren't thankful, we tend to treat what God made badly. We might be selfish or not careful with it. What would it look like to be unthankful? What are some ways we can show our appreciation for the beauty and awesomeness of His creation?

---

## BIBLE STORY REVIEW & BIBLE SKILLS

### Creation Walk (10 min)

- ✦ Where is the Book of Genesis located in the Bible? (*the first book*) Who wrote Genesis? (*Moses*) Moses wrote the Pentateuch, or the Law, which are the first five books of the Bible. The Bible is God's Word. God chose people to write down the message He gave them.

- ★ Use the small group timeline to show kids today's Bible story. Point to the first picture. Explain that God the Father, God the Son, and God the Spirit have always existed. (See John 1:1–4.) God did not begin at the beginning of the timeline because He has always been and always will be. God is eternal. Our timeline begins when God created everything for His glory. Write the numbers 1–6 on separate sheets of paper and tape them around the room.
- ★ As you review the Bible story, ask kids to stand by the number that indicates what day of creation you are speaking about. Ask classes with more advanced writers to take a pencil with them so that they can list on that sheet of paper some of the things that God created on that specific day:
  - Great White Shark
  - Cactus
  - T-Rex
  - Bald Eagle
  - Mount Everest
  - Strawberries
  - The Pacific Ocean
  - The Moon
  - The North Star
  - Cheetah

## ACTIVITIES

### What Day? (5 min)

- ★ Guide kids to help you make up motions for each of the six days. For example, for Day 1, kids might hold up both arms as if they are seeing light for the first time, or they might make a big circle with their arms because God created the earth. On Day 2, they might make waves with their arms to indicate that God separated the waters from the sky. For Day 3, kids might stand or bend like a tree. Continue making motions to illustrate what happened on each day. Review them a few times before beginning the game. Call out one of the days. Challenge kids to do the motion for the day.

### Worship Pictures (10 min)

- ★ Give kids individual pieces of paper. Guide them to draw things that God created that inspire them to worship Him.

### Activity Page: Creation Maze (5-10 min)

Guide boys and girls to complete the activity page.

### Prayer & Requests (3-5 min)

Lead kids in prayer. Praise God for the great gift He has given through His creation. Ask God to help each child be thankful to Him when enjoying the beauty of creation.

### Recap Cards (1-2 min)



# CREATION MAZE

INSTRUCTIONS: Find your way through the maze to reveal the days of creation.

**Finish**

**Day 6**

**Day 5**

**Day 4**

**Day 3**

**Day 2**

**Start**

**Day 1**

**KEY PASSAGE:** 1 Corinthians 8:6

**BIG PICTURE QUESTION:**

- Why did God create the world? God created the world and everything in it for His glory.

**BIBLE STORY:**

**GOD CREATED THE WORLD**

- In the beginning, there was nothing but God.
- God made the world out of nothing.
- God saw everything He made was good.
- God planned for all of creation to bring Him glory.

**FAMILY DISCUSSION STARTERS:**

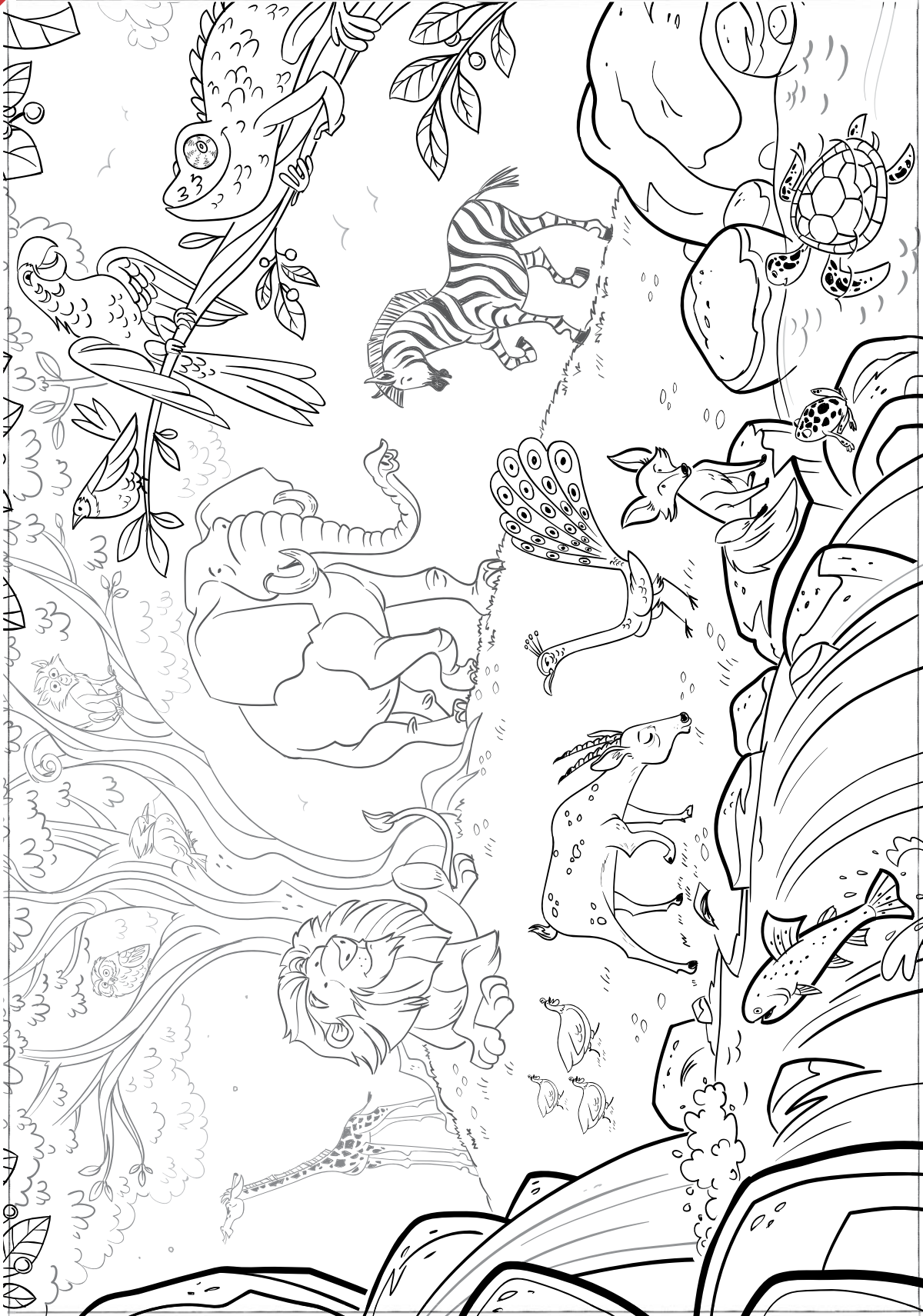
- What are some things that God created? (See Genesis 1–2.)
- What does it mean to bring God glory? (*We can show people how awesome God is.*)
- How can you and your family bring God glory this week?

**FAMILY ACTIVITY:**

- As you are riding in a vehicle, lead kids to observe God’s creation around you. Talk about how God’s creation displays His glory. Pray as a family, thanking God for His creation.
- Go further: Take a family nature walk.

*Younger Kids Activity Pages*  
Unit 1, Session 1

**SAMPLE**



God Created the World  
Genesis 1:1-25

MAIN POINT: GOD CREATED EVERYTHING FOR HIS GLORY.

LIFEWISE  
ACADEMY  
+ + +

POWERED BY THE GOSPEL PROJECT

# RECAP CARDS



## TAKING LIFEWISE HOME

Living LifeWise means applying our lessons at home, at school, and everywhere in between. Our Recap Cards highlight the FIVE big ideas from each lesson that will help you live LifeWise every day.

**STORY POINT:** The main idea of the Bible story – what happens or what we learn about God there.

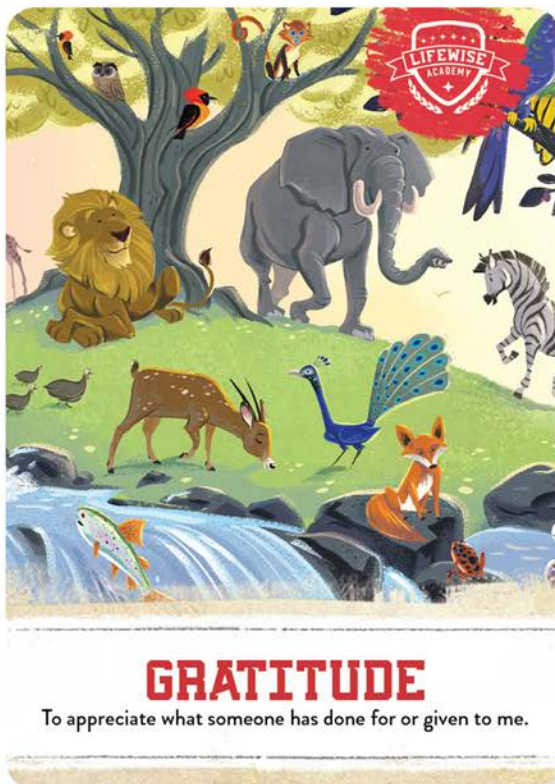
**BIG PICTURE Q & A:** The connection between the story and one of the big ideas (themes) of the Bible.

**JESUS CONNECTION:** How the story points to Jesus, the true hero and example in the Bible.

**KEY PASSAGE:** A Bible verse that will help you better understand the Bible story.

**LIVING LIFEWISE:** The connection between what we learn about God and how that truth transforms our character in practical ways.

LEARN MORE AT [LIFEWISEACADEMY.COM](http://LIFEWISEACADEMY.COM) POWERED BY THE GOSPEL PROJECT



## GOD CREATED THE WORLD

Genesis 1:1-25

**STORY POINT:** God created everything for His glory.

**BIG PICTURE Q & A:** Why did God create the world? God created the world for His glory.

**JESUS CONNECTION:** Jesus is the Lord over everything. Everything was created by Him and for Him. Jesus holds everything together. (Colossians 1:16-17)

**KEY PASSAGE:** 1 Corinthians 8:6

**LIVING LIFEWISE:** We can show **GRATITUDE** for God and all that He made.

LEARN MORE AT [LIFEWISEACADEMY.COM](http://LIFEWISEACADEMY.COM) POWERED BY THE GOSPEL PROJECT

# ABOUT LIFEWISE ACADEMY

LifeWise Academy is a Released Time Religious Instruction (RTRI) program which exists to reach students in public schools with the gospel. Under little-known RTRI laws, students can be released from public school during the school day to attend religious classes, provided the program is off school property, privately funded and parent permitted.